

iTest G20 Integrated Monitoring Module

Online monitoring module

- Lightweight design whole set of module weighs only 1100g.
- Can be fixed or mobile installation
- Free gimbal + split module to realize 360° free detection
- 2kHz-65kHz, automatic adjustment of the detection band according to the scenario
- Real-time presentation of time-domain features and PRPD spectrum
- Enabling rapid multi-target inspection and improving detection efficiency



iTest G20 Integrated Online Monitoring Module

G20 online acoustic camera can be fixed and mounted near the key production parts that need to be monitored. It can provide 24-hour online monitoring, report the monitoring point information in real-time, and quickly locate and report the abnormality to backstage. The instrument utilizes microphone array beam forming technology to obtain sound source distribution data, and with the high-definition camera to collect real-time video images, through the sound source distribution data and video images for sound and image fusion. Through the network transmission, the video data and audio data are transferred to the background system, and displayed, recorded and analyzed through the background management system. Applied in the power system, it can help you to detect potential partial discharge fault points.

Acoustic Parameters	
Acoustic Measurements	128 low-noise MEMS microphones
F. O. V.	50.5°
Dynamic Range	>120dB
Bandwidth	2kHz-65kHz,
Range Adjustment	Automatic
Frame Rate	25FPS
Measuring Distance	0.3 m-130 m
Functions	Distribution Line Transmission Line Substation
Physical & Battery Data	
Dimension	100mm×100mm×40mm
Weight	1100g
USB Port	USB 3.0 Type-C
Voltage Consumption	
Supply Voltage	DC 12V
Power Consumption	10W

User Interface	
Video Resolution	1640×1234
Video Frame Rate	25 FPS
Image Frame Rate	30 FPS
Data Storage	
External Storage	64GB SD Card
Internal Storage	8GB, Emergency storage only
Data Format	.jpg .mp4
Camera	
F. O. V.	50.5°
Focal Length	4.57mm fixed
Pixel	8 million
Environment Parameters	
Working Condition	-10°C-+50°C, 10%-95% Non-condensing
Storage Temperature	-20°C-40°C

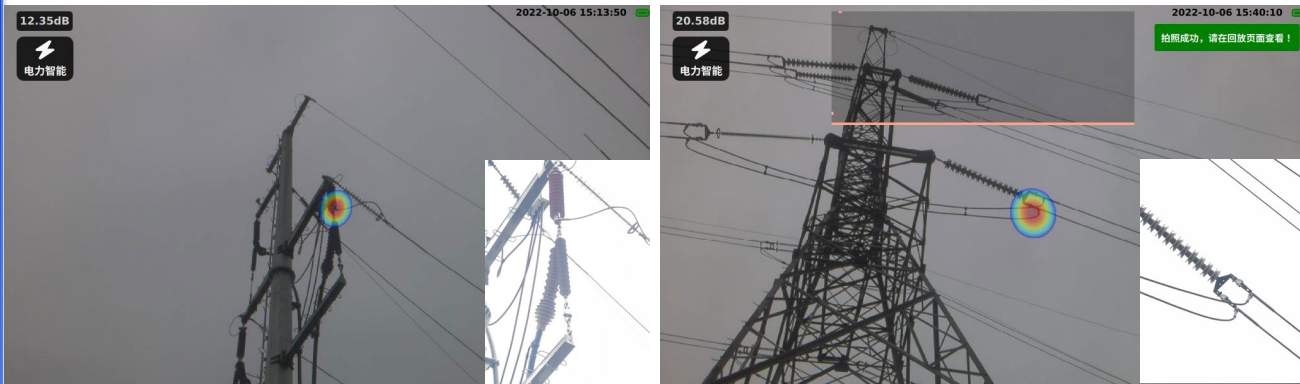
iTest G20 Integrated Monitoring Module

Precautions & Cases

iTest G20 Advantages of the integrated monitoring module

- **Efficient:** 50.5° F.O.V., 25FPS, flexible installation methods, continuous tracking and monitoring.
- **Straight:** High-precision algorithm accurately locates PD, generates real-time image feedback data to the background display, and intuitively displays the PD point.
- **Intelligent:** Offline identification of PD, real-time display of PRPD spectrum, and intelligent diagnosis of PD fault types during inspection.
- **Noise Resistance:** Dual protection easily deals with noise interference and enables the detection of tiny localized discharges.
- **High Adaptability:** Universal communication protocol, flexible docking most of the data background, to achieve seamless data connection.
- **Quality Service:** 2-year warranty; timely response; sufficient spare parts; professional team to provide equipment and test reinforcement.

Cases on transmission lines



Cases in substations



Cases on distribution lines

